

*brenda*

CHRISTIAN

c o s m e t i c s

CATALOG



*b r e n d a*

CHRISTIAN

*Nurturing Through Cosmetic Innovation*

***Recipient Glamour Gold Award  
Named Harper's 100 Best  
London Times Top Ten***

800-759-8498 • 904-249-0102 • 904-249-7008 Fax

[www.brendachristian.com](http://www.brendachristian.com)

Email: [info@brendachristian.com](mailto:info@brendachristian.com)

## Table of Contents

### Cleansers

Herbal Cleansing Milk	1
Glycolic Facial Polish	1
Jojoba Facial Polish	1

### Remineralizers & Toners

Mandarin Facial Toner	2
Mineral Hydrating Mist	2

### Nurture Treatments

Magnet Remedies Eye Serum	2
Daily C Serum	3
Glycolic Serum	3

### Moisturizer & Protection

Firming Complex	4
-----------------	---

### Treatments

Oxygen Complex	4
Sun Protection Intense	4

### Skin Treatment Masques

DeTox	5
Oxy Hydra Zen™	5

### Eyes, Lips & Face

PrimaFirm	6
Deluxe Eyeshadows	6
White Light by BCPRO	6
Ravenous by BCPRO	7
1st Light by BCPRO	7
Utaupia Definition for Eyes	7
Intensity Fluid	7
Color Remedies	8
Sheens	8
Remedies Color Adjusting Foundation	8
Luxury Finishing Powder	9
Peter Island Bronze	9
Cipria Confetti	9
Forgive Past Sins	10
Diamond Powder	10
New Cipria Gleamer	10

Aqua Firm™ Blushing Color	11
Deluxe Blush	11
PHATTENUP™	11
Base Coat for Lips	12
Luxury Lip Definer	12
Luxury Lip Color	12
Luxury Lip Gloss	12
Goddesses Are Made by BCPRO	12
Treatment Mascara Duo®	13
Bodacious Lashes Mascara	14
Universal Brow Definer®	13
Perfect Brow®	13

### Brushes & Tools

Shape and Guard™	13
Lash Control Brush	14
Concealer Foundation Brush	14
Travel Brush Set	14
Luxury Foundation Brush	15
21 Piece Set w Case	15
6-Pack Detail Set	15

### Body Care

Body Nurture Bath & Shower	16
Body Nurture Cream	16
Body Nurture	16
Body Nurture Oil	16

### Necessities

Palette Makeup Primer	17
Delete	17
Padlock Finishing Spray	17

### Kits

Perfect Brow & Lash	17
---------------------	----

### Relaxation Music

When Angels Dream	18
When Angels Dream 2	18

### New

Aqua Firm™ Blushing Color	19
---------------------------	----

# About Brenda Christian Cosmetics



The history of Brenda Christian Cosmetics, Inc. is tightly related to the personal history of its founder, Brenda Christian. Brenda began her beauty career in 1979 by teaching natural nail care classes in Houston, Texas. She loved teaching and was strongly encouraged by her peers and clients to learn makeup artistry. Working in Houston's hot, humid climate made Brenda realize that there was a real need for cosmetics and skin treatments that worked in every climate, not just New York and LA where the makeup professional communities were focused. In 1981, with a thirst for knowledge, and a desire to create a cosmetic line for

her clients, Brenda began a simultaneous study at the arm chairs of some of the country's most prominent cosmetic chemists and Hollywood's most talented makeup artists. Among the first things she learned was that makeup artists were in need of many products which were not readily available in the marketplace. With a strong desire to help women achieve total self esteem, and the business background to build a team of professional makeup artists to achieve the dream of not just doing makeup for a short lived benefit, but teaching clients how to do their own makeup with step by step instruction, Brenda introduced her first product, a Soufflé' Foundation. True to her commitment to her clients, Brenda focused her energy on teaching real women; one by one in private classes how to apply makeup. Brenda would actually do a client's eye and then carefully, patiently guide the client to duplicate her work. This grew into Brenda's mantra, "Making a Professional Difference, One Face at a Time".

In the fall of 1984, Brenda Christian Cosmetics expanded into a sourcing company for professional makeup artists. Brenda Christian Cosmetics enlarged its presence in the market with the creation of Brenda's "flagship" product. The Perfect Brow® system was developed giving its user eyebrows that really looked fuller and very natural. This one color Universal Brow Definer pencil uses the pH in your skin to adjust its color to your own natural eyebrow hair color. The recipient of the international "GLAMOUR" Gold Award and a recipient of the London Times "Top Ten Products to be Imported into Europe", Brenda's Perfect Brow system is unparalleled within this industry.

As President and CEO, Brenda's philosophy is simple: "I love creating cosmetic solutions for my clients, making a real difference, elevating their self esteem. That's what it's all about for me. It is my passion! I thrive on creating a product to meet a specific need for one of my clients. However, what I enjoy most is sharing the solutions and teaching. It does not matter whether it is another professional aesthetician, a makeup artist, a physician, a model, an actress or one of my private clients". For years, cosmetic companies have manufactured makeup and skin care products in order to sell these in large quantities through advertising and promotion. Women, who purchased these products, were actually purchasing a "dream" but soon realized they did not know how to use the products they had just purchased. That is why Brenda Christian has chosen to market her products through professional aestheticians, cosmetologists, and makeup artists, who then service their clients with Brenda's products. This is her way of making the 'dream' come true!

## Herbal Cleansing Milk

Herbal Cleansing Milk is a unique milk-gel one step facial Cleanser and Makeup Remover. Filled with energizing Ginseng, calming Marigold, and refreshing Cucumber, Herbal Cleansing Milk thoroughly removes all facial and eye makeup without dehydrating or stripping the skin of its natural moisture. To use, remove eye makeup by massaging in a circular motion over the entire eye area. Keeping eyes closed, lift away makeup with a warm, wet wash cloth, or facial sponge. Next, remove all facial makeup and cleanse neck tissues by massaging Herbal Cleansing Milk over face and neck in a circular motion using a firm pressure. Makeup, environmental debris, and excessive oils will completely dissolve. Lift away HCM with warm, wet wash cloth or sponge. No residue will remain, and your skin will feel toned and refreshed.



## Glycolic Facial Polish

Every day skin cells die. It's a fact. They must go. Every morning start your day with Brenda Christian Glycolic Facial Polish to gently remove dead cells and reveal fresh, glowing skin. It contains little polished spheres suspended in a gentle, non-sudsing gel cleanser. As you wash with Glycolic Facial Polish, tiny skin blockages, as well as dead skin cells are removed, revealing clear radiant skin. A perfect amount of 0.5% pure Glycolic Acid acts as a blockage solvent to enhance the gentle cleansing action of Glycolic Facial Polish for total daily renewal.



## Jojoba Facial Polish

For oily skin, wake up with Jojoba Facial Polish. This lightly sudsing facial wash is filled with circular beads made of natural Jojoba (pronounced ho-ho-ba). As you wash your face each morning, the Jojoba beads gently work with Aloe Vera to emulsify the hardened oils in clogged skin while comforting newly cleansed cells.

Massage, massage, massage in upward and outward circular movements over entire face. Rinse well.





## Mandarin Facial Toner

Mandarin Facial Toner is a gentle, yet highly effective Alpha Hydroxy skin-balancing tool. It utilizes the combination of mandarin orange extract and witch hazel to take combination and oily skin to the perfect skin pH of 5.5. Mandarin Facial Toner acts as a very gentle exfoliant by utilizing Alpha Hydroxy Acid to lift away dry skin cells which can block pores and cause skin to appear sluggish while super energizing the skin with Papaya, Lemon Balm, Marigold, and Cucumber.



## Mineral Hydrating Mist

Give your skin a drink surged with minerals and your skin will have a new radiance! Brenda Christian scientists have created a way to penetrate large molecular sized minerals deeply into the skin, by fermenting the minerals with yeast, changing the molecular structure of the precious minerals to a fraction of their original size. This allows the minerals to penetrate deeply, passing through the epidermis to provide essential mineral content to the skin's layers. These minerals substantially improve the texture, moisturization, and health of the skin. Spritz Mineral Hydrating Mist to set makeup, hydrate, rehydrate, calm, and refresh your face, neck and body. Mineral Hydrating Mist is available in Neroli and Aloe Rose.



## Magnet Remedies Eye Serum

Wear Remedies Eye Serum 24 hours a day to firm, tone, lift, hydrate, and protect the delicate tissues surrounding your eyes. Remedies Eye Serum contains the highest levels of bioactive ingredients that work in tandem to strengthen each other in order to provide maximum anti-aging benefit around the clock. Hyaluronic Acid and Sodium Hyaluronate provide deep tissue hydration as Green Tea Extract, an antioxidant with 20 times the strength of Vitamin E, encourages healthy new skin cell reproduction. Every ingredient is boosted to such a degree of efficacy that the synergistic benefits are immediately visible.

Always top Remedies Eye Serum with Primafirm (firming eye makeup base) before applying eye makeup. Your eye makeup will appear fresher and your eye tissues will be bathed in nutrients throughout your busy day.





## Daily C Serum

Give your skin its daily vitamins! Vitamin C is an essential nutrient for the formation of collagen, the fibrous protein that contributes to skin firmness. When the skin is exposed to free-radical generators (e.g. UV light, smoke, air pollution, etc.) the level of Vitamin C in the skin becomes depleted. Not enough Vitamin C reaches the skin through oral ingestion; therefore, it is necessary to replenish the lost Vitamin C topically.

Brenda Christian Daily C Serum contains two forms of Vitamin C, water-soluble Ascorbic Acid and oil-soluble Ascorbic Palmitate. By combining these two forms of Vitamin C with Salicylic Acid, a beta hydroxyacid that exfoliates the outer layer of skin by 20% without irritation, the level of Vitamin C, which reaches the deeper layers of skin, increases more than 800%. In addition, Brenda added Vitamin E to her Daily C to soothe skin and to further act as an anti-oxidant to fight free radicals. Daily C Serum also regulates excessive oil production and helps to heal sun-damaged skin. Vitamin C also acts as a skin lightener, naturally evening the skin tone, resulting in a complexion that is visibly brighter and clearer, with a smooth, firm texture. Daily C Serum may be used night and day.

Notice an immediate improvement in skin texture with morning application of Daily C Serum under Firming Complex and/or Sun Protection Intense, followed by Color Adjusting Foundation. At night after cleansing, place two to three drops of Daily C Serum into the palm of your hand. Using the index and middle fingers of the other hand, apply the Daily C Serum over entire face and neck. Follow with Oxygen Complex, Oxy Hydra Zen, or Comfort Serum.

## Glycolic Serum

Remove wrinkles, clean out pores with BC Glycolic Serum. Pure, unbuffered Glycolic Acid (10%) mixed with Salicylic Acid (2%) and Whole Leaf Aloe Vera dissolve away oil, superficial lining, and dead, dry skin. Apply two drops to entire face, excluding eye area every three nights to begin. Repeat for two weeks, then graduate to every other night for two weeks, then maintain at every other night, alternating with Oxygen Complex alone or move to every night for very oily skin. Cover with Comfort Serum or Oxygen Complex to blanket the skin in moisture surging, healing protection.





## Firming Complex

Get rid of that slacked skin we all know as chicken skin! Firm up your face and neck! Firming Complex strengthens and firms the skin structurally, working with synergistically perfected active ingredients to bind moisture, increase elasticity, maintain high blood circulation, destroy free radicals, and create healthy, strong new cell reproduction. This results in the reduction of fine lines and wrinkles, an increase in cell density and the thickness of the skin, and an increase in the skin's firmness and a serious decrease in sagging of skin.

## Oxygen Complex

We work. We stress. We need to just stop and breathe.....and so does our skin! Introducing Oxygen Complex, filled with Revitalin to merge your face with nutrients and oxygen while you sleep, total skin workout. Based on our scientific research, we believe Oxygen Complex is the best nutritional moisturizer on the market. Oxygen Complex can be worn during your no makeup days but is highly recommended for all evenings when you are not treating yourself to a Brenda Christian Oxy Hydra Zen Sleep Over Facial.



## Sun Protection Intense



Selected by the Professional Women's Tennis League as the official sunscreen of the Bausch & Lomb Tennis Championships, this Brenda Christian formula combines total sun block protection (SPF 30 chemical free) with gentle moisturizers, which stay in place during daily activities as well as sporting events. Does not burn the skin when perspiring and will not run. Perfect under Color Adjusting Foundation or worn alone. The best anti-aging product in the world is total sun block. Don't leave home without it. Because ours is oil-free, it is perfect for all skin types and will not irritate very oily or acneic skin. Light natural color allows you to see where you have applied protection, then disappears wrapping itself around each individual skin cell for total sun protection. Perfect for men and children for daily use without irritation. Soothes the skin after shaving or any other form of exfoliation. Should be worn over Daily C Serum by adults

for total anti-aging skin benefit. Follow with Color Adjusting Foundation.

**Brenda Christian** offers two intensive face masques: DeTox for vacuuming oil and debris from within the skin, and Oxy Hydra Zen™ for a total skin-rejuvenation experience.

Realizing that the number-one barrier for client/patient skin care can be lack of time, Brenda created Oxy Hydra Zen™ to be worn as the client sleeps. Apply thickly with masque brush. Oxy Hydra Zen™ adheres to the skin and will not easily transfer onto bed linens.

### Oxy Hydra Zen™

Wear this masque to bed and you will wake up in the morning with firmer, clearer, more vibrant skin! The essential blend of powerful ingredients calm, soothe, and hydrate the skin's surface as Glycoproteins boost oxygen content of skin, increasing cellular respiration and invigorating the skin for firming, detoxification benefit. Perfect flight treatment -- wear during and after air travel.



### Detox

Muscle masque to deep clean and minimize acne and blackheads. This pore-vacuuming miracle masque draws debris, dead skin cells, and excessive oils and toxins from deep within the skin by combining a synergistic blend of clays mined in China and the Rocky Mountains of Montana with Sulphur, Whole Leaf Aloe Vera, and other key ingredients.



## Primafirm

Firming Eye Makeup Base

Before any eye-makeup is applied use Primafirm to firm and hydrate the delicate eye lid area and even color tones for perfect long lasting eye makeup application. Pigments can leach valuable moisture from eye lids causing premature aging in the eye area. Primafirm literally rescues the eye lid, halts any pending

dryness and repairs previous loss of elasticity. Primafirm uses specific spherical silicas to diffuse light to trick the eye and give a soft focus back lighting to all eye makeup application. A peptide chain stimulates collagen and elastin production for both short and long term anti aging benefits. Filled with anti oxidants and emollients, prima firm lifts the eye lid area giving an immediately visible more youthful eye appearance.

Before Primafirm



After Primafirm



## Deluxe Eyeshadows: Single & Duo

Silky, fine-powder eyeshadows that are designed for everyday usage. Deluxe Eyeshadows are long-lasting professional quality eyeshadows that stay in place. Each of the Brenda Christian Eye Shadows may be used wet or dry and work beautifully with the Brenda Christian / BCPRO Intensity Fluid to create water-proof eye color and intense, blend-able eye liners.

## White Light by BCPRO

White Light is the Pro Makeup Artist's secret to opening up an eye for video or photography. Neutralize the appearance of a too-tired, blood-shot eye by softening the red inner membrane of the eye or use to line the eyes for avant garde makeup applications and to lighten any other eyeliner. White Light is perfect to highlight the eyebrows, creating a type of lift and focus around the eye brow. White Light can be used around the lip area to create an illusion of fullness and to draw focus to a neutral tone lip, giving it more dimension. A soft smudge of White Light in the center of the lips over Luxury Lip Color or primary Luxury Lip Definer will give the appearance of larger lips. White Light can be used as the perfect eye highlighting shadow and because of its convenient stick form can be toted by clients on the go.





## Ravenous by BCPRO

Definition for Eyes, Ravenous is the name selected by Brenda Christian to launch the new collection of eye definition pencils in her BCPRO for Professional Makeup Artists division. Eye lining has changed significantly for the last two fashion seasons and continues to evolve. Everything from the “lineless eye look” created from mixing shadows for the soft evolving eye, to the most smoldering eyes ever, with detailed liner reminiscent of the 60’s and rimming of the inner eye rim for intensity. Creative opportunity abounds! Now the perfect, blackest black pencil filled with anti-bacterial properties and ingredients to soothe the delicate skin surround the eyes has been born!

## Utaupia Definition for Eyes by BCPRO

Simulates natural shadow.

The Utaupia in the BCPRO Definition line is the absolute must for each of us to have in our cosmetic case. It is the perfect one product does all.

Utaupia is used to line the eyes, contour the eyes, contour the cheek-bone to allow it to stand out, shadow the sides of the nose to perfect for photography, slim a face by gently shadowing fullness around the jaw line.



## First Light Definition for Eyes by BCPRO

Offentimes, on the go, one will glance into a mirror and realize a touch up is in order. First Light is your constant traveling companion. A gentle cover up/ highlighter in an evening bag sized pencil, First Light can highlight an eye brow, hide under eye circles, camouflage that pesky last minute blemish, line around lips to make them appear fuller. Formulated with Jojoba Oil and Vitamin E, First Light is the perfect touch up stick. First Light never tugs at the skin because it is filled with moisture to pamper your face, eyes, and lips. First Light is the perfect companion to Utaupia, the Brenda Christian professional makeup artist’s contouring stick.

## Intensity Fluid

Is the professional makeup artists’ secret for changing color intensities in any type of Eye Shadow, Tender Blush Powder, or Mineral Pigments. Just one drop of this magic fluid intensifies any type of pigment. Not only is the color more intense, it will last much longer after application, and is highly water resistant. Intensity Fluid is formulated with pure glycerin to moisturize the skin as chamomile calms and soothes the skin’s surface.





## Color Remedies

Get rid of dark circles and puffiness under your eyes! This tri-color corrective concealer kit does it all.

The **Putty** Color neutralizes red and purple tones in the face. The **Peach** Color brightens under-eye circles, neutralizing blues and grays.

The **Beige** Color acts as a general-purpose corrective concealer and matte highlighter for the entire face. The key to this formula are the special pigments, which actually reflect light away from shadows, lines, and discolorations on the face. We recommend wearing Color Remedies over Remedies Eye Serum for long-lasting, stay-in-place, all-day application. No more lining under the eyes. Wear the Beige as your perfect eye makeup base. Deluxe eyeshadows glide on and stay! Individual Color Remedies are also available.

## Sheens

Wear Pearl on your eyelids with no creasing! Pearl-gloss your Eyes, Cheeks, Lips, and Shoulders! Just press Brenda Christian Millennium Sheens (Pearl White, Platinum, or Bronze) over your regular eye makeup or cheekbones. Mix a bit with your firming body oil and create a beautiful glow for your shoulders. Subtle enough to be worn every day but can be applied with more intensity for evening glitz.



## Color Adjusting Foundation

This makeup reads your skin color and adjusts to it, automatically!

Skin can change color due to sun exposure, lighting, etc. and this Brenda Christian chameleon formulation changes too. Select your base tone of Porcelain, Natural Beige or Mediterranean Beige. Apply with special included sponge. Use only one pump for entire face. Pump into palm of hand, and then take all the foundation onto the sponge.

Press over forehead, nose, each cheek, and chin. Quickly spread over entire face. Notice how the foundation fills in each tiny pore with surface soothing Lecithin and skin becomes flawless, prepared for color. Watch the color adjust to your skin, moving lighter or darker, warmer or cooler. Now as seasons change and your skin naturally lightens or darkens due to sun exposure, your BC Color Adjusting Foundation will change as well. Color Adjusting Foundation helps to heal acne and soothe dry skin.



## Luxury Finishing Powder

If you have ever feared powder because it made you look dry, tired or cakey, discover what the marriage of research and technology to the finest talc in the world can accomplish. Brenda Christian Finishing Powder is perfection incarnate for your face. Finishing Powder sets makeup beautifully in one translucent shade, adding invisible light facets everywhere you want them. Observe as lines miraculously seem to disappear, shadows seem to brighten and your entire countenance takes on a forgotten youthful energy! To use, press Finishing Powder over your entire face and brush gently.

## Peter Island Bronze

Brenda Christian has created the perfect facial bronzer in honor of one of her favorite get-away spots, Peter Island. Luxurious Peter Island, one of the British Virgin Islands, is surrounded by bright sun, brilliant blue water, and serene beaches. The quiet, elegant ambiance of the island inspired Brenda to create "Peter Island Bronze". The waves of sheer ribbons of Jojoba filled color can be used individually to highlight eyes, define eye contours, shade an eyelid, contour a cheek, yet sweeping the brush through all four colors and blending together will impart a beautiful soft glow of bronze which can be worn over entire face, neck, and shoulders. Never appearing orange or artificial, Peter Island Bronze is a touch of luxury, every woman should own. Peter Island Bronze is formulated with the finest of Italian Talc filled with pure, organic Jojoba Seed Extract and Vitamin E.



## Cipria Confetti

A Fun New Formula

Celebrate your life with Brenda Christian New Cipria Confetti! This fun new formula is the culmination of Brenda's favorite four colors of silky Cipria Gleamer blended into one, fun to use, facial highlighter. Highlight above your eyebrows, cheek bones, brow bone, décolleté, and shoulders every day with Cipria Confetti to treat yourself to a moist, rich appearance.



## Forgive Past Sins

### Softens the Appearance of Rosacea

Brenda Christian has taken the best of her popular Rosacea Eraser (Redness Neutralizing Luxury Powder) and combined it with the beautiful texturing of her Forgive Past Sins (Color Correcting Luxury Powder) to launch her new Rosacea Eraser. This beautiful, mineral infused, rare Italian Talc based Powder has a special Lavender strip

of color to soften lines and wrinkles, along with stripes of Mint and Butter to visually reduce redness.

Brenda's exclusive formula virtually erases imperfections that manifest themselves as we age. Small scars, irregular pigmentation, ruddiness, and lack of luster are effortlessly neutralized! This total absolution for your face tricks the human eye by combining calming skin nutrients with micro milled Italian pigments which color correct, to balance skin tone. State of the art micro-encapsulation technology performs like tiny little mirrors, to energize even the most exhausted complexion.

## Diamond Powder

Diamonds Are A Girl's Best Friend

Subtle, Sophisticated, Moon-lit Glamour

Travel from day into evening, sporty into formal with just one little significant change. This is no ordinary powder. Brenda started with her best selling Luxury Finishing Powder which minimizes lines with the finest milled Italian talc treated with special light reflective coatings. Next she took this silky base and suspended tiny little minerals cut like diamonds which softly capture the light as you move.



## New Cipria Gleamer

"New Cipria Gleamer" with: Pink, Chiffon, Lilac and Peach to be used on Eyes and Face. This miracle product works absolutely EVERYWHERE! Use it on eyes alone to achieve a soft, glowing effect. Wear over Deluxe Eye Shadows to add extra light or shimmer. Try mixing the Pink and Peach for a perfect eye lid color. Apply Lilac in the eye contour to softly intensify eye contour. Highlight with

Chiffon under and over the eye brow as well as top of cheek bones.

Unleash your personal creative genius and have fun creating your own color combinations for fresh, pretty eyes, cheeks, and face in an instant.



## Aqua Firm Blushing Color

Truly cosmeceutical, this amazing concentrated introduction from Brenda Christian takes a firming skin care gel and infuses pure fruit like colors through itself to birth the world's first active blushing treatment. Four pure colors work beautifully on any skin type because Aqua Firm Blushing Colors contain no white pigment. See-through cellophanes of color give a visual lift, as a concentrated, custom blend of ingredients firm the skin's surface and smooth the cheek area. Notice how, upon application, an immediate cool energy is experienced. This is the active matrix of our new formula at work.

## Deluxe Blush

Created using the latest research and technology, use Deluxe Blush for sheer, blushing colors. It will give you a clear, glowing, see-through color that looks natural and never heavy.



## PHATTENUP™

LIP TREATMENT

Although the feeling of new PHATTENUP™ is lightweight and moist, this highly concentrated lip treatment by Brenda Christian is an intense formula containing a patented natural tripeptide. This natural peptide has demonstrated its efficacy in restructuring the connective tissue by stimulating the synthesis of collagen (up to 350%) and the glycosaminoglycans (up to 146%). After 30 days of daily application, the following results were obtained:

Clinical improvement of the lips, scored by a dermatologist:

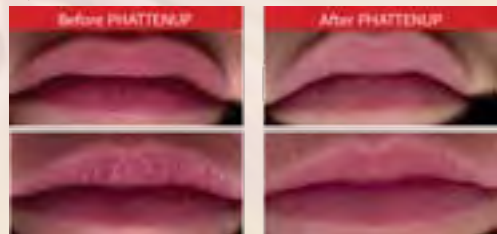
Hydration: up 50-60%

Reduction of lip furrows: 10 to 30%

Enhancement of the volume of the lips: up to 40% increase.

Immediately experience a plumping, extreme smoothing action of lines surrounding the lips and the lines running vertically through the lips (we didn't have those when we were 16 you know).

Long term: Wow! Clinical tests prove that PHATTENUP increases your own natural collagen production by up to 350% within 30 days. It's like collagen injections or better yet, pain free fat injections.





## Base Coat for Lips

Smooth out those little lines around your lips making them look firm and full! Then keep your lipstick on for hours with no touch-up! Base Coat for Lips smoothes and firms the lips, and fills in tiny lines around the lips with moisture-filled nanospheres. Keeps lip color from "feathering" in tiny lines around the mouth while plumping the lips to make them appear fuller.



## Luxury Lip Definer

Define perfect lips with no bleeding! Hydrates Too! At last, a lip liner, that doesn't bleed into tiny little lines around lips. Stays in place, yet glides on like silk due to generous infusions of Aloe Vera, Jojoba Oil and Tocopherol (pure Vitamin E). Waterproof, long-lasting formula.

## Luxury Lip Color

The "Good-for-your-Lips" Lip Color begins with a natural beeswax base filled with Avocado Oil, Babassu Oil, Jojoba Oil, Illipe Butter and Shea Butter, as well as Vitamins E, A and C. Folic Acid makes the most of lip fullness and surges lips with hydration as it colors with gorgeous, up-to-the-minute fashion colors. This lip color moisturizes and stays in place without a heavy feel. Thirteen hydrating shades from which to choose.



## Luxury Lip Gloss

The most shiny, non-gooney Luxury Lip Gloss.

Say good-bye to sticky, goeey, foul-tasting glosses. Moisturizing Luxury Lip Gloss is not just "icing for your mouth", but a hard working skin neutraceutical with Bisabolol (Derived from Chamomile) to soothe and Tocopherol (Vitamin E) to help anti-age. Its peppermint infusion freshens breath while Jojoba (*Simmondsia Chinensis*) helps keep lips kiss-ably hydrated.

## Goddesses Are Made Not Born by BCPRO

Brenda Christian's "Goddesses Are Made Not Born" Definition lip liner pencil is based in natural Sunflower Extracts which are rich in Oleic and Linoleic Acids for extreme lip moisturization, as well as Rhea Succedanea Fruit Wax which provides anti-cancer and anti-viral properties, and Tocopheryl Acetate, a potent antioxidant to combat free radicals to protect the delicate lip surface from damage and premature aging.



## Treatment Mascara Duo®

Build huge volume and give your lashes a spa treatment at the same time! Double-ended miracle mascara conditions eye lashes, actually plumping them from the inside out with special, Panthenol-filled eyelash primer and mascara. Apply primer to eyelashes first working from root to tip of lashes. Primer will curl your eyelashes. Allow to dry for about 30 seconds. Then, apply one or two coats of Treatment Mascara over Conditioning Primer. To enhance curl, hold lashes on upper lid upward with fingertips. As the primer and mascara set, your lashes will freeze in curl. Treatment Mascara Duo® is water-resistant, not water-proof and will remove with any makeup remover. We recommend Herbal Cleansing Milk to condition both your lashes and the skin around your eyes.



## Universal Brow Definer® & Perfect Brow®

Unique one-color, two-step eyebrow creation system recommended by The American Journal of Esthetic Medicine for sculpting perfect eyebrows in seconds each day. Just stroke Universal Brow Definer® (one color that uses the pH in your skin to adjust to your own natural eyebrow hair color) through the eyebrow area in short, firm strokes, working in the direction that brow hairs would grow naturally. Then, take the Perfect Brow® and press over the Universal Brow Definer® with medium pressure to set new eyebrow strokes and separate each stroke into tiny natural looking hairs. The Perfect Brow® holds natural eyebrows in place, sets newly applied brow hairs and will never look shiny. Absolutely will not flake. Recommended for contact lens wearers. Highly water resistant.

## SHAPE AND GUARD™

THIS INGENIOUS LITTLE TOOL IS AN ABSOLUTE MUST FOR EVERYONE!

Never be concerned about your mascara ruining a beautiful makeup application. "Shape and Guard™" is on the job. It helps you shape eyelashes perfectly, with no mistakes - ever! "Shape and Guard™" is the newest member of the acclaimed Brenda Christian "Perfect Brow and Lash" family of innovative eye care products. For such a simple looking tool, you will be delighted with the ease and convenience of this unique device.





## Control Brush, US Patent No. 7,219,801 & Bodacious Lashes Mascara

For use with the Brenda Christian Professional Mascara and Anti-bac Palette

This oddly shaped innovative brush from Brenda Christian has a slivered half moon shape with key indentions located along its perimeter. The shape of the brush lines up perfectly with the eye lashes along the upper eye lid and is used to apply Mascara, working from the roots of the eye lashes to the tips of the lashes. By placing the Shape and Guard Eyelash Tool under the eyelashes and brushing the Treatment Mascara onto the Shape and Guard, huge eyelashes are created.

To place Bodacious Lashes Mascara on the lower eyelashes, just hold the Shape and Guard Eyelash Tool under the lower eye lashes and brush the Control Brush which has been dipped into Mascara squeezed onto Brenda Christian Anti-bac Palette, over the eyelashes working from the root to the tips of the lashes. The special grooves in the Shape and Guard Eyelash Tool create huge volume around each eye lash while protecting the skin around the eyes from smudges and smears.

Hold the upper lid eyelashes upward with the Control Brush to set in curl and definition. The Control Brush is easily sanitized and prepared for your next client, allowing at long lasting, bacteria free eye makeup application.

## Concealer Foundation Brush

Brenda Christian noticed that even though she taught each of her clients to use a pointed, tapered concealer brush to apply Color Remedies, each client continued to use their fingers. When she inquired, they said it was just so much easier to use their fingers, yet they were unable to get into the tiny little orifices around the nose and the eyes. Brenda then took a larger brush and carefully beveled the edge of the brush so that a quick, easy solution could be found. By using the tip of the Concealer / Foundation Brush to apply into the tiny crevices of the face and then blending with the beveled edge of the brush to blend, a time-saving solution was created. The Brenda Christian Concealer/Foundation Brush can also be used to apply Remedies Color Adjusting Foundation.



## Travel Brush Set

This conveniently sized collection of Sable and Taklon Brushes is perfect for travel and everyday application of your favorite Brenda Christian Cosmetics. Packaged in a pouch with a special inside zippered compartment for extra gear like Tweezers, Q-Tips, Scissors, etc. Pro Quality in just the right size for the client on the go!



## Luxury Foundation Brush

How do professional makeup artists achieve that airbrushed looking, perfect foundation finish? Imagine a thousand tiny fingers delicately stroking

the most perfected foundation in the world gently over your skin, allowing the Brenda Christian synthetic mink brush to present a more perfected you. Each imperfection seems to miraculously disappear even in the most difficult areas to blend; around lips, the bridge and corners of your nose. Results in perfectly distributed foundation or powder with just enough coverage to capture light in all the right places. Too indulgent? Not for something you will use every day, for the rest of your life.

## 21 Piece Brush Set with Case

Each of the brushes included in this set may be purchased individually.

The set includes:

Powder One, Fan One, Blush One, Blush Two, Foundation Two, Cream One, Shadow One, Shadow Two, Shadow Three, Shadow Four, Shadow Five, Angle One, Angle

Two, Angle Three, Flat Liner One, Liner Two, Liner Three, Metal Lash One, Brow One, Lash Control Brush (US Patent No. 7,219,801), and Lip One in a Large Brush case w Zipper Pocket.



## 6-Pack Detail Brush Set

Just another secret from Brenda Christian's Pro Makeup Designers: Have you ever wondered how professional makeup artists can line eyes or lips so perfectly? Or, apply that perfect little touch of highlighter, even in the tiniest of spaces? Introducing Pro Detailers, the newest collection of professional lining and detail brushes from Brenda Christian. Each brush allows perfect control so that you too can create your own professional makeup looks!



## La Crème Citronne Body Nurture Bath & Shower Cream

Body Nurture Bath & Shower Cream contains a perfect selection of plant extracts to nourish your skin. For example, the Aloe Vera works to smooth, soften and heal, while the Sea Kelp provides minerals and phytochemicals to control the tone and texture of the skin. Its silky lather will leave you soft and moisturized.

## La Crème Citronne Body Nurture Cream

Hydrate and nourish your skin with a wonderful medley of botanical extracts, shea butter, vitamins and powerful humectants from the sea. Arnica works to soothe and calm your skin as Vitamin A penetrates the skin providing essential nutrition for skin growth and renewal. You will experience an effortless glide and pleasing warmth from your Body Nurture Cream.



## La Crème Citronne Body Nurture Polish

This creamy blend of Shea Butter, Vitamins and Exotic Extracts will gently buff away dull skin cells, leaving your body perfectly polished and hydrated. Pineapple provides a retexturizing enzyme as Pomegranate helps boost skin restoration and Vitamin C provides collagen maintenance. For a spa experience: using small circular motions, massage Body Nurture Polish onto very wet skin, focusing on one area at a time. Then rinse well and gently pat dry.



## La Crème Citronne Body Nurture Oil

Made using made using First-Press (Virgin), 100% Pure Jojoba, Body Nurture Oil has many uses. It is, truly, an incredibly versatile product. Because of its affinity with our skin it is an excellent soother, softener, and conditioner. Massage therapists and aestheticians use it for body, scalp and facial massage. It provides just enough friction reduction (glide) without sacrificing control. But there's more. Body Nurture Oil conditions the scalp and hair, eliminating dry scalp and babies' cradle cap. It deep cleanses the skin and removes make-up. Use it as a pre-shave softener for legs and face; soothe the skin with Body Nurture Oil and the essential oil of Sweet Orange after shaving or hair removal.



## Palette Makeup Primer with Chemical Free SPF 30

Use before applying foundation to even the facial palette, providing a perfect foundation for all your makeup. Palette nurtures the skin with Titanium and Zinc Oxide for chemical free sun protection. Wear alone or under makeup!



## Delete by BCPRO

Quickly remove makeup and excess oils from the skin between makeup applications with this Unique Milk-Gel Makeup Remover. Delete can be applied over makeup to be removed with fingertips or brush. Using light pressure, wipe Delete away with tissue, cotton swab, wet cloth or sponge. No residue will remain.

## Padlock by BCPRO

Padlock utilizes fermented minerals to saturate makeup and literally "lock makeup application into place" for longer lasting, fresher makeup. Padlock can also be sprayed between makeup applications to add moisture to the skin.



## Perfect Brow & Lash Kit

All the Brenda Christian essentials in one kit! This is all you need to have perfect eyes!

The kit includes:

Universal Brow Definer, Perfect Brow Gel, Treatment Mascara Duo, Precision Blade Sharpener, Shape and Guard, and a Beautiful Eyes Brochure all in a Vinyl Bag.





## Music for Healing and Massage

Offentimes it can be difficult to unwind after a stressful day. Simple solutions like a relaxing environment enhanced with properly scented candles and organic music created to melt away the tensions of the day can make all the difference. Brenda enjoys listening to her special selections during air travel for a more relaxing flight. "When Angels Dream" and popular "When Angels Dream Two" are the perfect addition to a relaxing mineral bath at the end of your day.



### When Angels Dream

When Angels Dream is 62 minutes of seamless meditative music based on two classical Indian ragas. Bamboo flute, synthesizers, Tibetan bowls and guitar create an ambience conducive to healing, massage and dreamtime.

Deep Relaxation Five years in the making, When Angels Dream II combines melodic flute, expansive esraj, angelic vocalizations with uplifting harmonica all played over a richly orchestrated bed of acoustic guitar, spacious synthesizers and ambient Tibetan bowls.



*b r e n d a*  
CHRISTIAN

*Nurturing Through Cosmetic Innovation*

[www.brendachristian.com](http://www.brendachristian.com).


# AquaFirm Blushing Color

Brenda Christian takes a firming skin care gel and infuses pure fruit like colors through itself to birth "The World's First Active Blushing Treatment".

Three pure colors work beautifully on any skin type because Aqua Firm Blushing Colors contain no white pigment. See-through cellophanes of color give a visual lift, as a concentrated, custom blend of ingredients firm the skin's surface and smooth the cheek area. Notice how, upon application, an immediate cool energy is experienced as the active matrix of Aqua Firm begins to work.

 **Apricot:** Pure, clear coral which can be layered from the softest peach to tropical melon.

 **Raspberry:** Pure, clear pink which can be layered from soft cotton candy to hot Bougainvillea.

 **Grape:** No Brown Here! Layer from soft, neutral plum to clear vibrant Bordeaux.

Mix Colors For Unlimited Color Possibilities And Enjoy The Fresh Color Clarity That Only Brenda Christian's AquaFirm Blushing Color Can Offer.

## Key Ingredients Give Real Benefits

### Centella Asiatica Extract

- Encourages healthy skin renewal
- Stimulates collagen development
- Gives cheeks a firm, uplifted appearance



### Rosemary

- Lifts cheek area for an overall natural face lift
- Strong natural Anti-oxidants reduce free radical damage
- Firms the cheek area for visual texture improvement minimizing surface lining



### Echinacea

- Reduces water retention
- Soothes and calms skin surface

### Castor Oil

- Rich in Ricinoleic Acid found in no other substance heals skin damage

### Glycerin

- Natural Humectant draws water from the air to hydrate cheek area

*b r e n d a*

CHRISTIAN

*Nurturing Through Cosmetic Innovation*



*Brenda Christian Cosmetics, Inc. ©2009*  
*1518 Roberts Drive • Jacksonville Beach, FL 32250*  
*800.759.8498 • 904.249.0102 • 904.249.7008 Fax*  
*www.brendachristian.com*  
*Email info@brendachristian.com*

No portion of this material may be copied or reproduced without the express written consent of an officer of Brenda Christian Cosmetics, Inc.